

CENTER FOR EXCELLENCE in the  
**NEUROSCIENCES**

SEMINAR SERIES

An unexpected journey: the tale of a basic scientist in the world of osteopathic research

**Lisa M. Hodge, Ph.D.**  
*Associate Professor,*  
 Department of Cell Biology and Immunology  
*Osteopathic Heritage Basic Science Research Chair*  
 The Osteopathic Research Center  
**University of North Texas Health Science Center**  
 Fort Worth, Texas

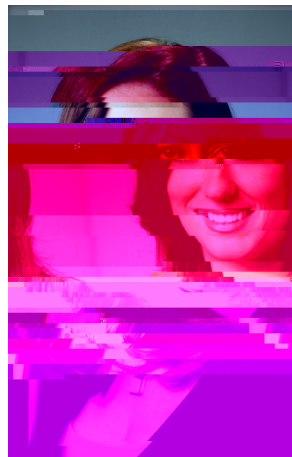
**Thursday, June 25<sup>th</sup> 2015**  
 12:00-1:00 p.m.

St. Francis  
 UNE, Biddeford Campus

L c b

Hosted by: Geoff Bove, D.C., Ph.D.

Sponsored by: C E N  
 COM B m D m



**Dr. Lisa Hodge** A  
 P D m  
 C B Imm m  
 O R C H  
 U C . N C H  
 B R C F .  
 O H F .  
 H m m  
 H , mm .D.  
 F I C mm F  
 R C , m m  
 J Am O A , m m  
 L B O R C mm , O  
 I A , C mm O R  
 P P m , E m B  
 M Am A m O .  
 N I H . H  
 Am O A , O  
 H F N I H